

## Accelerate qPCR Setup for SARS-CoV-2 Diagnosis with EzMate 601s

-- Application Concept.

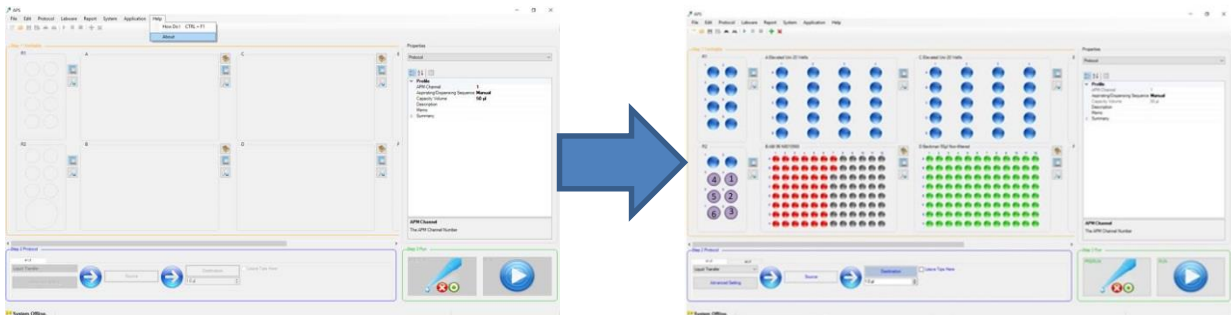
### The Request

During the pandemic time of SARS-CoV-2, a customer of our company is preparing the automation solutions for the diagnostic laboratories, including a viral RNA isolation and preparation of COVID-19 diagnostic tests based on Real-Time PCR. The company asked our help to prepare a complete methods and layout for qPCR Setup of their tests. After having a thorough study, we come up with the following suggestions.

### Our Suggestions

#### (1) Using machine to prepare the Master Mix:

If the user would like to use the machine to prepare the Maser Mix (19 ul Super Mix + 1ul Enzyme Mix), the 601S can set up maximum 50 tests per run (2 pieces of the Real Time RT-PCR Kit).



- Blue color: sample tubes (1.5/2ml tube)
- Purple color (1) (4): Super Mix
- Purple color (2) (5): Enzyme Mix
- Purple color (3) (6): Tube for storing Master Mix (Super Mix + Enzyme Mix)
- Red color : PCR tube (8 or 12 strip tube)
- Green color: Tips

#### (2) Prepare the Maser Mix manually :

If the user prefers to prepare the Maser Mix (19 ul Super Mix + 1ul Enzyme Mix) manually, the 601S can set up maximum 75 tests per run (3 pieces of the Real Time RT-PCR Kit) .

#### (3) More applications

Please contact us to design your automatic protocol of sample preparation